

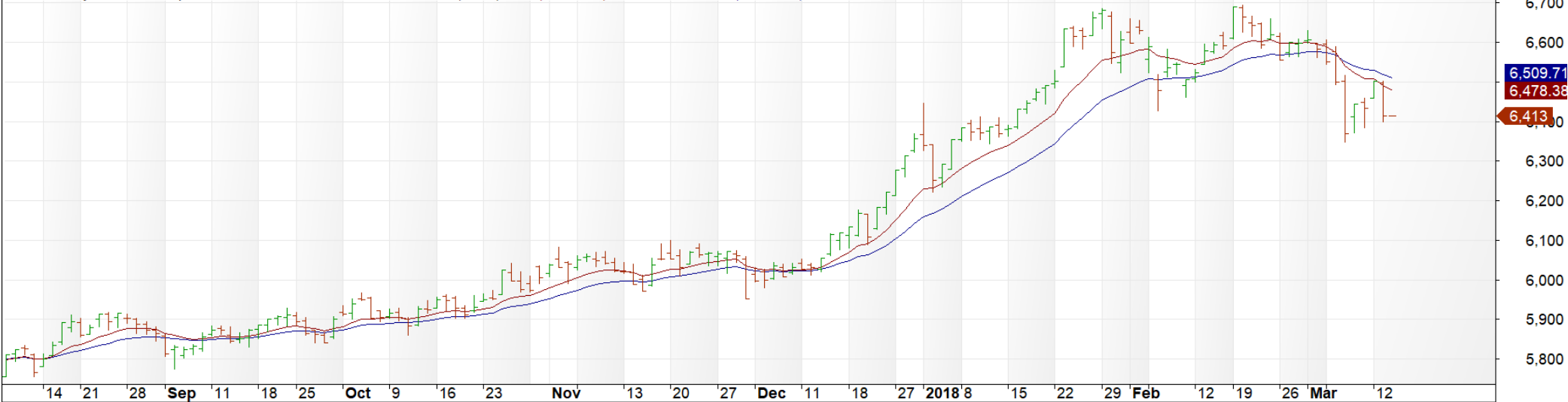
Technical View

14 Maret 2018

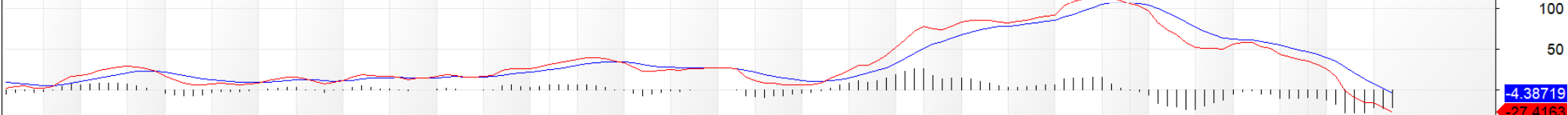
IHSG - 6,412 (Range : 6,335-6,540)

R3 - 6,575 S1 - 6,375
R2 - 6,540 S2 - 6,335
R1 - 6,475 S3 - 6,270

IHSG - Daily 3/14/2018 Open 6413, Hi 6413, Lo 6413, Close 6413 (0.0%) EMA(Close,11) = 6,478.38, EMA1(Close,22) = 6,509.71



IHSG - MACD(12,26) = -27.42, Signal(12,26,9) = -4.39



IHSG - Stochastic %D(15,3,3) = 30.39, Stochastic %K(15,3) = 28.78



UNVR (Sell) - IDR 50,450

Bottom Fishing : IDR 43,700

Cut Loss : IDR 53,700

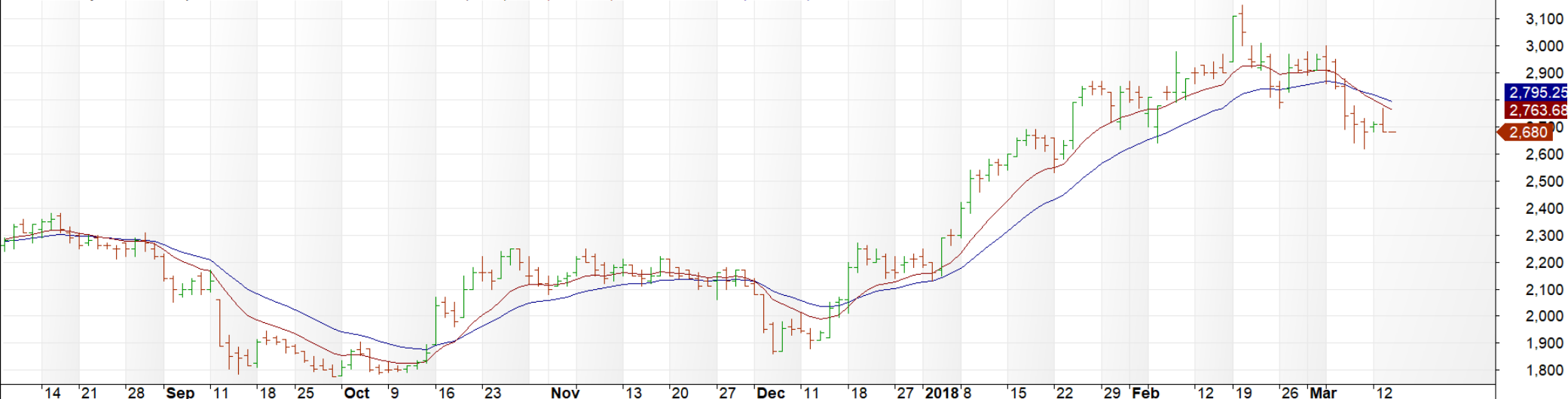


WSKT (Sell) - IDR 2,680

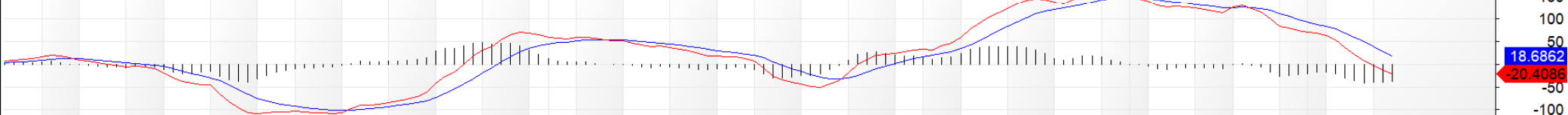
Bottom Fishing : IDR 1,955

Cut Loss : IDR 3,010

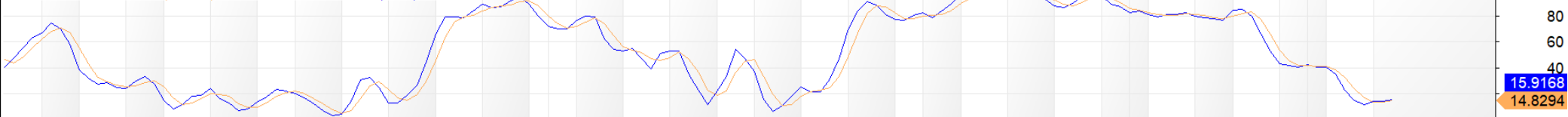
WSKT - Daily 3/14/2018 Open 2680, Hi 2680, Lo 2680, Close 2680 (0.0%) $EMA(Close, 11) = 2,763.68$, $EMA1(Close, 22) = 2,795.25$



WSKT - $MACD(12, 26) = -20.41$, $Signal(12, 26, 9) = 18.69$



WSKT - $Stochastic \%D(15, 3, 3) = 14.83$, $Stochastic \%K(15, 3) = 15.92$



ASII (Sell) – IDR 7,700

Bottom Fishing : IDR 6,725

Cut Loss : IDR 8,175



BSDE (Sell) – IDR 1,745

Bottom Fishing : IDR 1,435

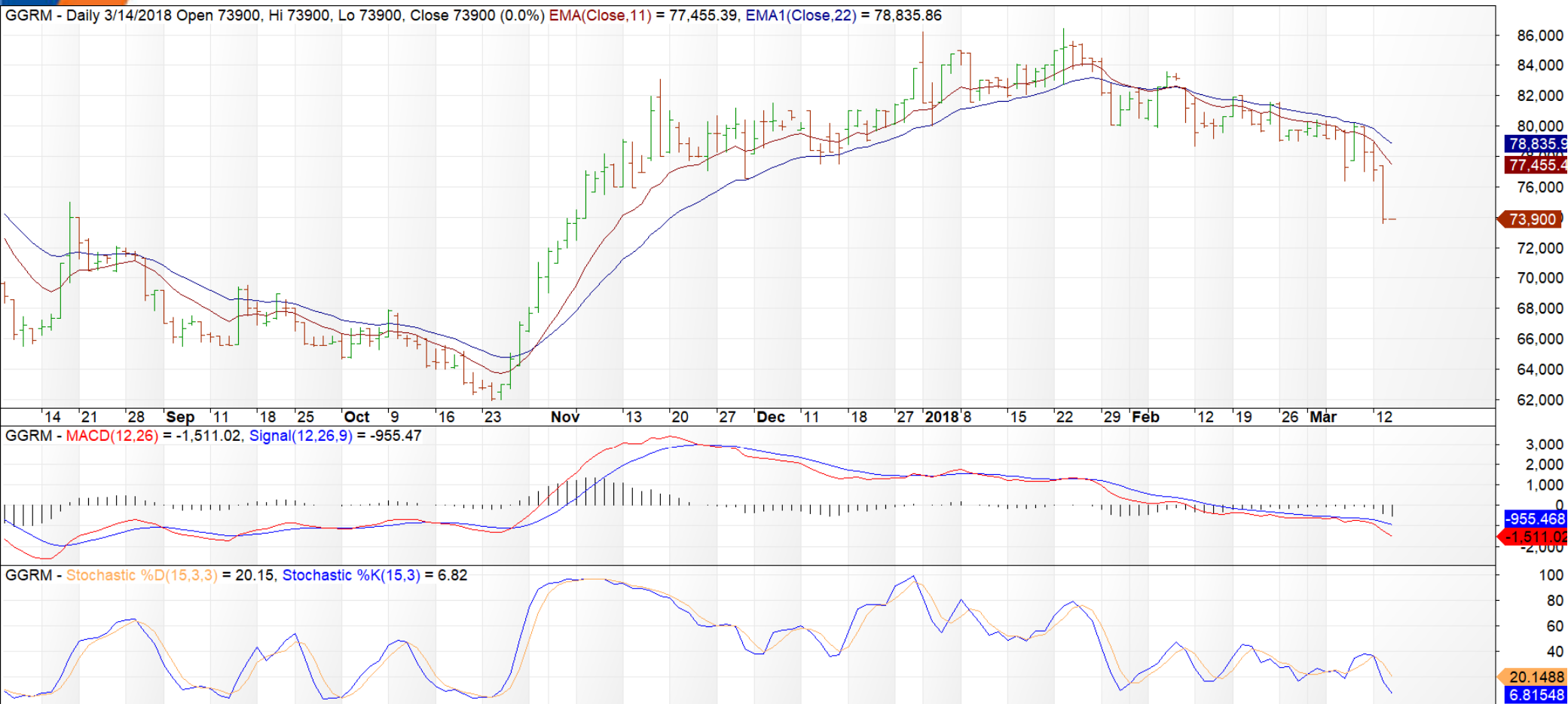
Cut Loss : IDR 1,895



GGRM (Sell) – IDR 73,900

Bottom Fishing : IDR 63,100

Cut Loss : IDR 79,300



PT. Mega Capital Indonesia

Menara Bank Mega 2nd Floor

Jl. Kapten P. Tendean Kav. 12-14A

Jakarta Selatan 12790

Telp : 021-79175599

Faks : 021-79193900

Email : research@megaci.com



DISCLAIMER

This Document is for information only and for the use of the recipient. It is not to be reproduced or copied or made available to others. Under no circumstances is it to be considered as an offer to sell or solicitation to buy any security. Any recommendation contained in this report may not be suitable for all investors and strictly a personal view and should not be used as a sole judgment for investment. Moreover, although the information contained herein has been obtained from sources believed to be reliable, its accuracy, completeness and reliability cannot be guaranteed. All rights reserved by PT Mega Capital Indonesia.